

35噸/時洗煤泥流化床鍋爐

## Sludge Coal Fired FBC Boiler



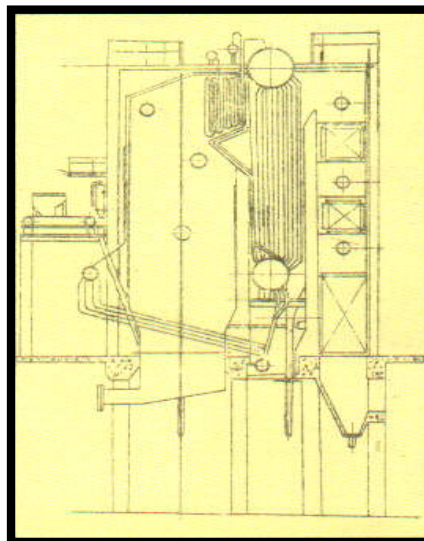
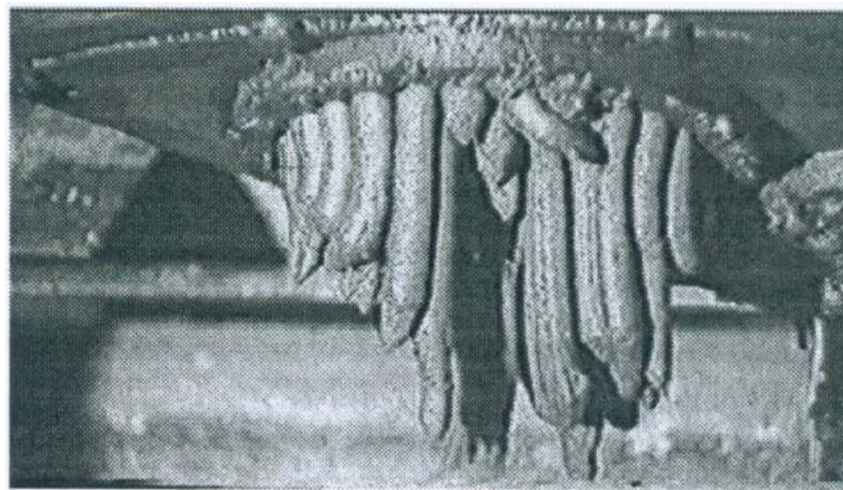
### WASTE SLUDGE COAL FROM WASHING PROCESS

- \* 0-0.5 mm
- \* 20-40% ASH
- \* 3500-4000 Kcal/Kg
- \* Mixed with sand

5% of washed coal will go to waste settling pond in every coal mining.

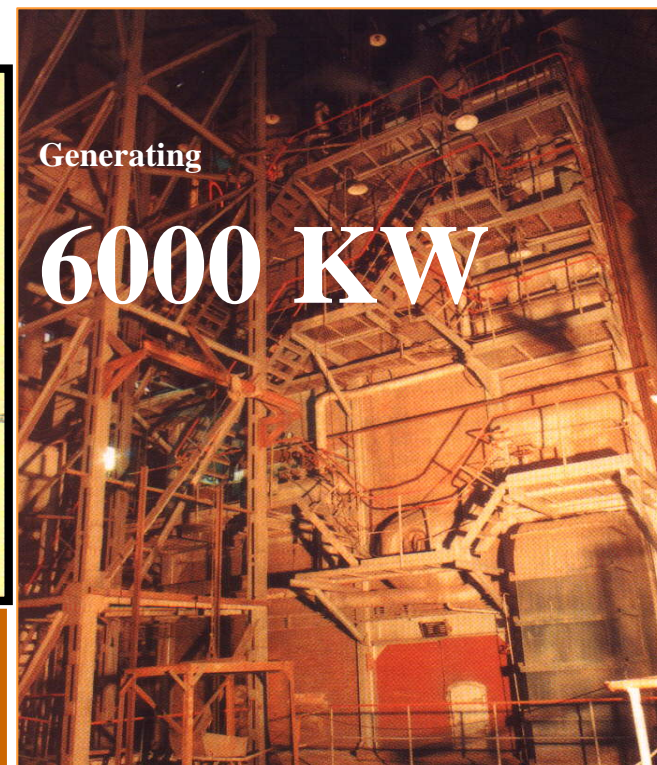


60% wet sludge coal (by-product of coal washing process of all coal mining) can not just be burnt in any other conventional method. This is the special way developed by **HAMADA BOILER**



CAPACITY : 35 TON/H  
PRESSURE : 39 KG/CM<sup>2</sup>  
SUPERHEATED 450 oC  
SYSTEM : FLUIDIZED BED  
FUEL : SLUDGE COAL

This technology is one of the most remarkable achievement of Hamada Boiler in cooperation with the Zhejiang University. Almost 60% water content coal sludge will be passing the mud pump to go to the top of the 35 meter high CFBC furnace where the specially designed extruder is located. When the sludge is extruded, it will fall automatically after reaching certain length due to its own gravity. Then while dropping 35 meter to the FBC bed, its surface will dry and solidified and Accumulated steam inside will build up pressure and will burst into pieces just before reaching the bottom to fluidize.



Model NG-35-39/450

