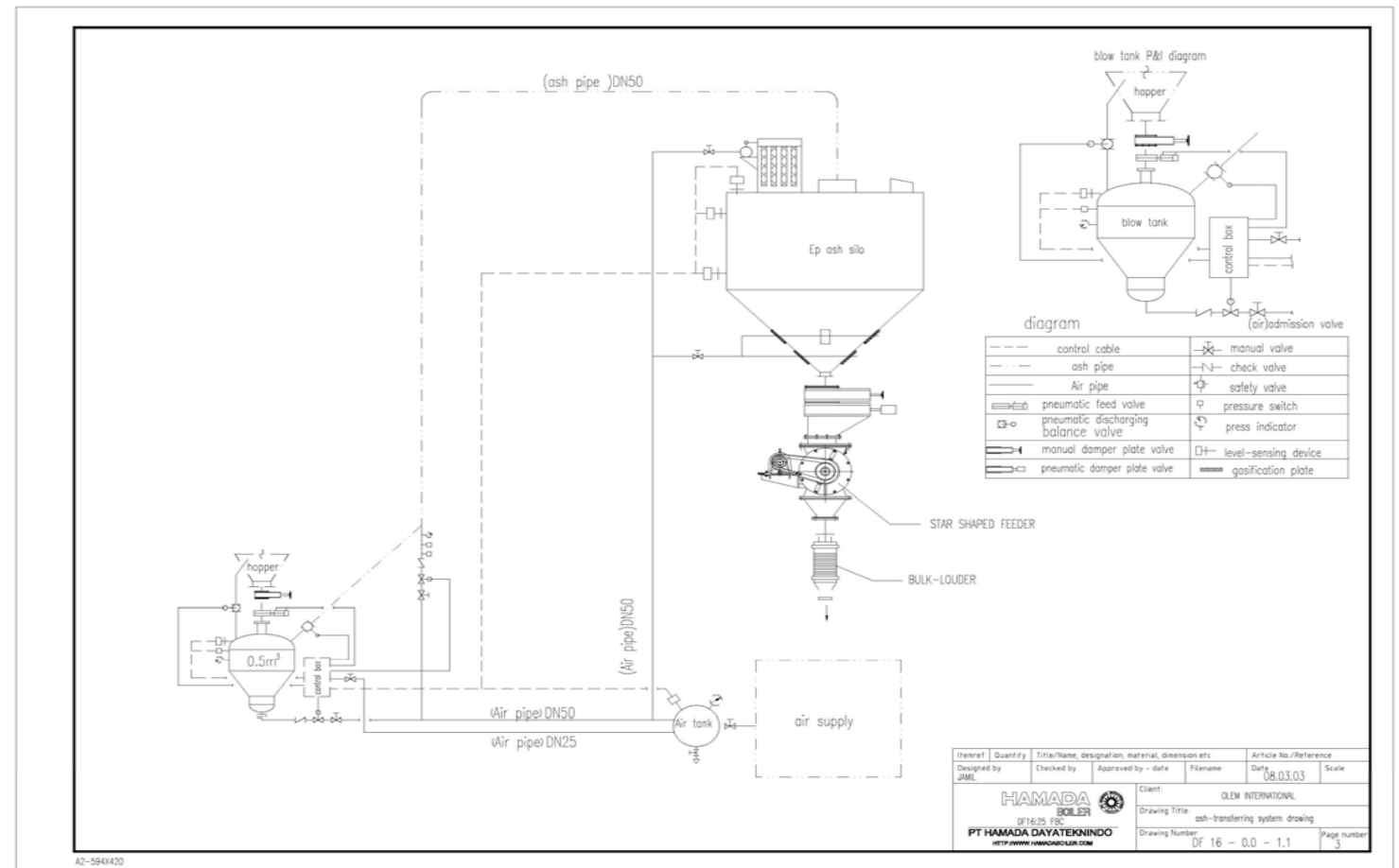
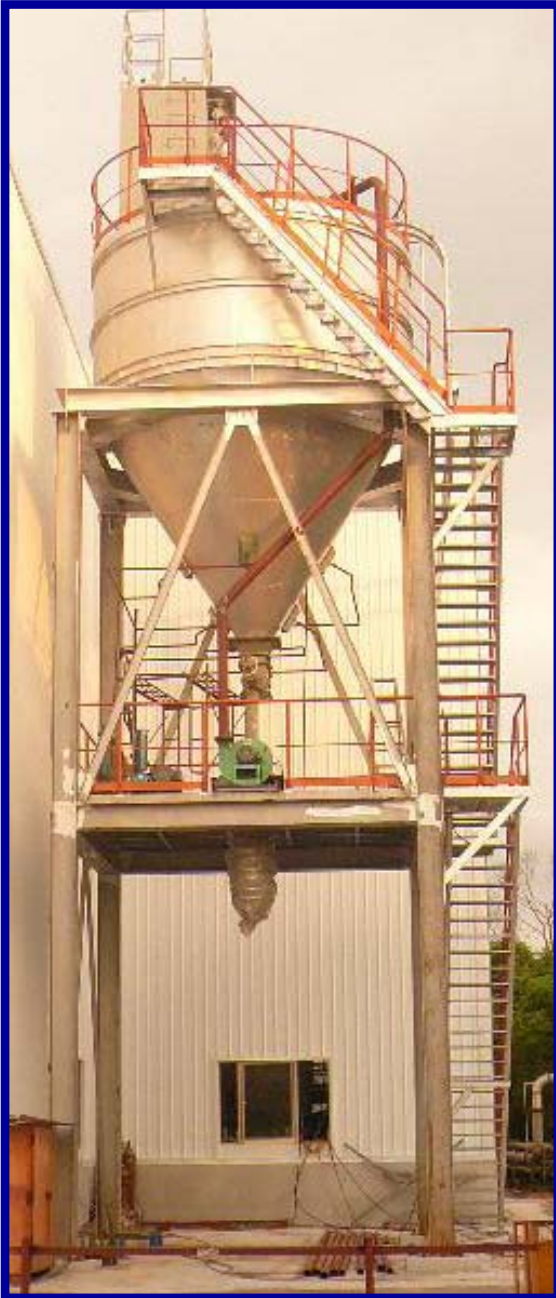


Ash bin pump and air conveyor/steel ash silo



This arrangement is a standard set-up of single unit of ash bin pump at the bottom of Bag Filter or EP connected to Steel made ash silo for automatic discharge of ash. Ash inside the silo has a bag filter to release excess air and keeps ash all the time fluidizing to maintain fluidity of ash.

